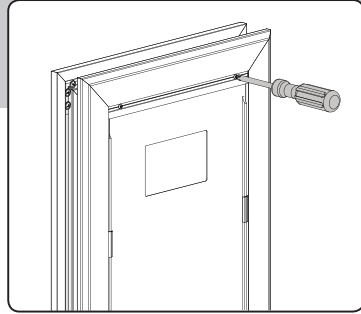




## Flap Replacement Directions

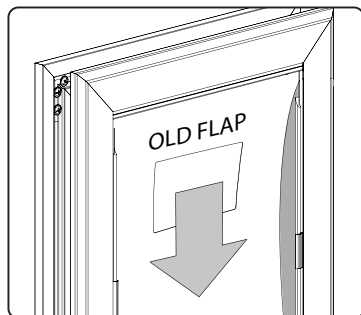
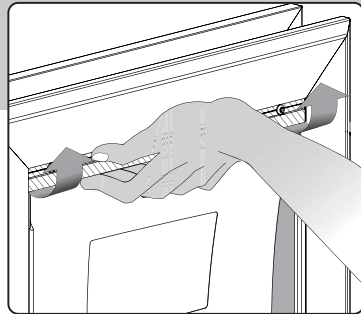
### Step 1

Using a phillips head screwdriver, remove the 2 screws that secure the flap inside of the flap hinge.



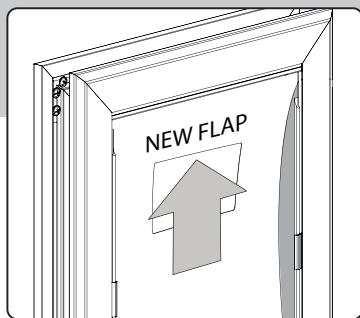
### Step 2

Rotate the flap hinge out and upward. As it revolves it will expand, releasing the flap.



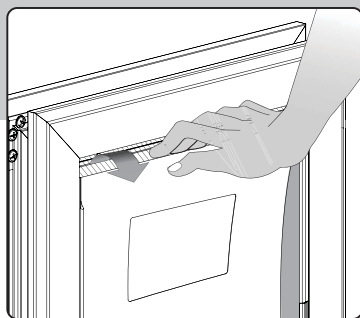
# Step 3

Slide the new flap into the flap hinge until it sits flush against the back of the hinge.



# Step 4

Close the flap hinge as you rotate it back into its original vertical position.



# Step 5

Replace the securing screws until snug. The flap should be hanging vertically, with no bowing.

